

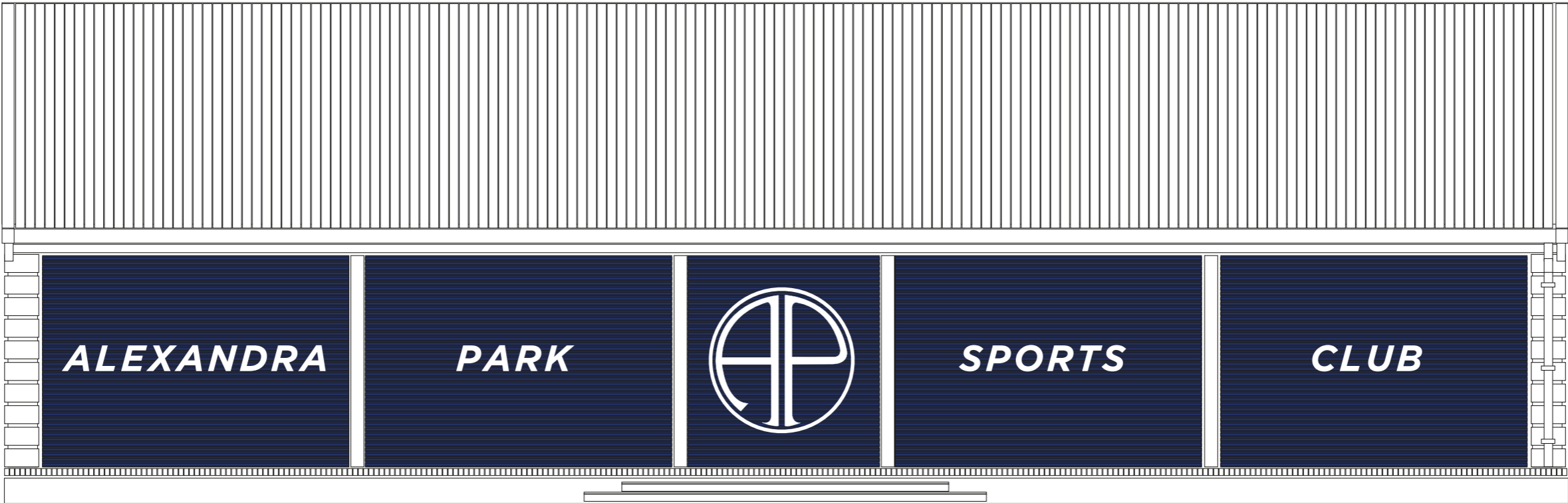


Please check this artwork carefully. Once you give your approval we understand that you are happy with everything shown below. Products are made to order and cannot be cancelled once production has started. Finished products can not be refunded or exchanged.

Alexandra Park Sports Club

Opt 4.

South Elevation  
Scale 1:100



Site Photo




Reference



PERMISSIBLE DEFECTS ON BESPOKE SIGNAGE

Defects less than 1mm are permitted within a 1m visual range. Defects up to 3mm are permitted within a 2m visual range. A normal viewing position is at an unobstructed viewing angle of 45° or more, and if indoors with a uniform typical level of lighting. Defects include but are not limited to opaque spots, bubbles, foreign bodies, etc. What constitutes a defect will change over time with reasonable wear and tear, settlement, weathering, and aging of materials. Therefore, what may be a defect at handover may not constitute a defect after 12 months.

#8442 VG	Rev: 1/3	Page: 4/6	05/09/2025	SCALE AS SPECIFIED @ A3
Internal	Shutter Artwork			
Drawn by PG	Alexandra Park Sports Club			

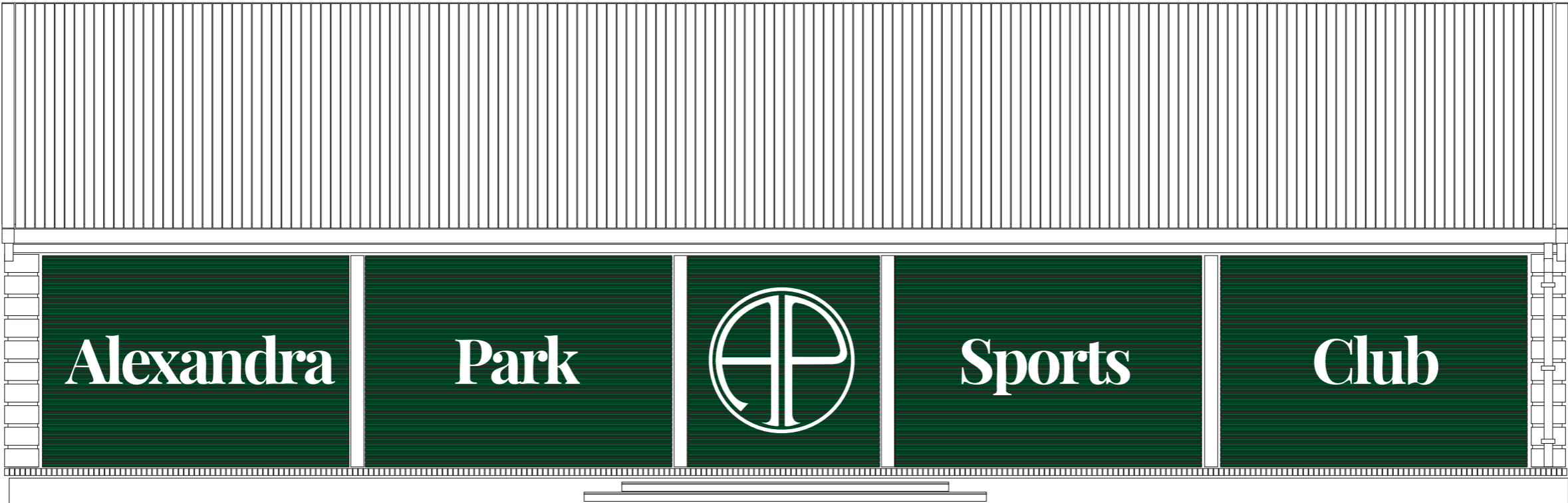


Please check this artwork carefully. Once you give your approval we understand that you are happy with everything shown below. Products are made to order and cannot be cancelled once production has started. Finished products can not be refunded or exchanged.

Alexandra Park Sports Club

Opt 5.

South Elevation  
Scale 1:100



Site Photo



Reference



<b>PERMISSIBLE DEFECTS ON BESPOKE SIGNAGE</b> Defects less than 1mm are permitted within a 1m visual range. Defects up to 3mm are permitted within a 2m visual range. A normal viewing position is at an unobstructed viewing angle of 45° or more, and if indoors with a uniform typical level of lighting. Defects include but are not limited to opaque spots, bubbles, foreign bodies, etc. What constitutes a defect will change over time with reasonable wear and tear, settlement, weathering, and aging of materials. Therefore, what may be a defect at handover may not constitute a defect after 12 months.	#8442 VG	Rev: 1/3	Page: 5/6	05/09/2025	SCALE AS SPECIFIED @ A3
	Internal	Shutter Artwork			<b>GOODWIN &amp; GOODWIN</b> <i>'SIGNS WITH SOUL'</i>
	Drawn by PG	Alexandra Park Sports Club			

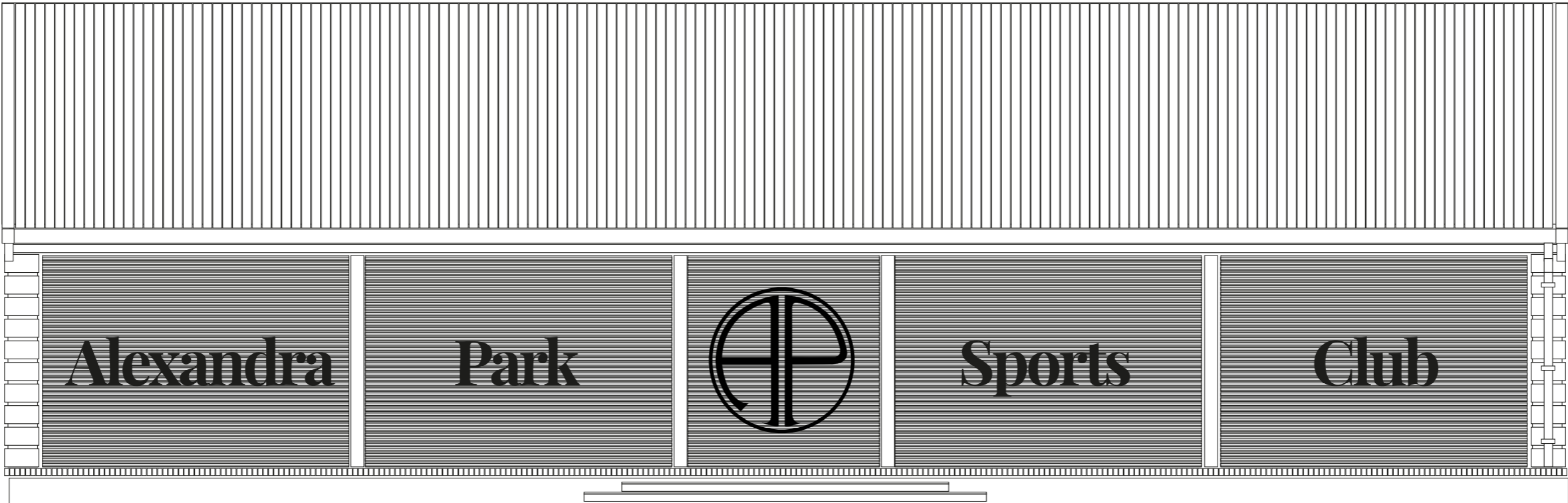


Please check this artwork carefully. Once you give your approval we understand that you are happy with everything shown below. Products are made to order and cannot be cancelled once production has started. Finished products can not be refunded or exchanged.

Alexandra Park Sports Club

Opt 6

South Elevation  
Scale 1:100



Site Photo



Reference



<b>PERMISSIBLE DEFECTS ON BESPOKE SIGNAGE</b> Defects less than 1mm are permitted within a 1m visual range. Defects up to 3mm are permitted within a 2m visual range. A normal viewing position is at an unobstructed viewing angle of 45° or more, and if indoors with a uniform typical level of lighting. Defects include but are not limited to opaque spots, bubbles, foreign bodies, etc. What constitutes a defect will change over time with reasonable wear and tear, settlement, weathering, and aging of materials. Therefore, what may be a defect at handover may not constitute a defect after 12 months.	#8442 VG	Rev: 1/3	Page: 6/6	05/09/2025	SCALE AS SPECIFIED @ A3
	Internal	Shutter Artwork			<b>GOODWIN &amp; GOODWIN</b> <i>'SIGNS WITH SOUL'</i>
	Drawn by PG	Alexandra Park Sports Club			